



DIPSA

Technes s.r.l.

Via Buozzi, 51
40013 Castel Maggiore (BO)
Tel. +39 051 705388
Fax +39 051 705452
www.dipsatechnes.com

**RAIL COUPLING
SHEARS**

TOA 3



Azienda con sistema di gestione
per la qualità certificato
UNI EN ISO 9001:2000
Cert. N. 0011866



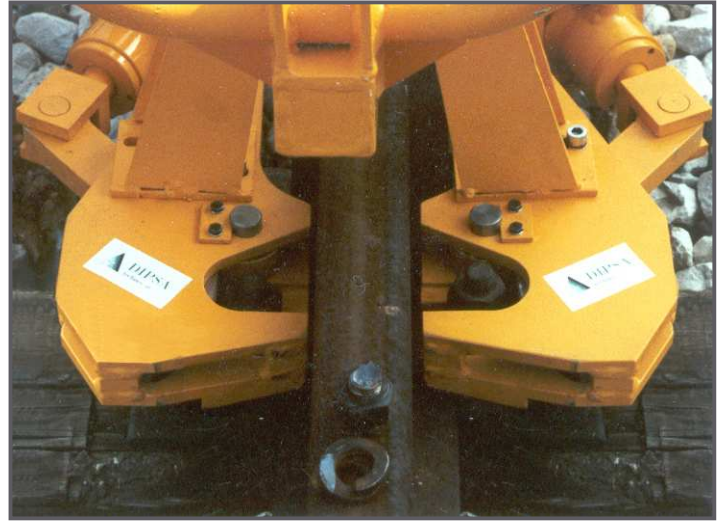
DIPSA

Technes S.r.l.

Via Buozzi, 51
40013 Castel Maggiore (BO)
Tel. +39 051 705388
Fax +39 051 705452
www.dipsatechnes.com

RAIL COUPLING SHEARS

TOA 3



Loosening of rusty, damaged, or time-worn rail couplings for track maintenance and/or rail replacement is a particular arduous operation. TOA 3, patented by Dipsa Technes, has been especially designed to overcome these difficulties: the machine is capable of simultaneously operating on two couplings on the in-and outside of the rail so as to completely release it from the plate seat.

The shearing system exploits the mechanical reaction principle induced by the plate or U-bolt; in this way the risk of damaging and thus deforming the dovetail seat of the plate is avoided.

Shearing takes place in correspondence to the spring washer and causes a sharp detachment that makes it un-necessary to have to further remove the U- and track bolts from their seats by hand.

The machine features an extremely simple-to-use adjustment device so as to accommodate for any axle distance between the couplings.

Thanks to this adaptability the machine can operate both on UNI 60 and UNI 50 tracks.

The oleo-dynamic power line operates at low pressure (about 100 bar) hence ensuring, in addition to the equipment's light weight, also maximum working safety and reliability.

The weight of the shearing tools is balanced by that of the control unit thus making for the effortless performance of all operations.

An optional small cross-rail carriage makes for easy and effortless shifting of the machine from one rail to the other.

Quick shearing makes for high hourly production.

The internal combustion engine with startup manual or electric is silenced in compliance with the latest applicable standards.

The machine, on request, can be equipped with a lighting system, for working in tunnel or the night.

TECHNICAL SPECIFICATIONS

BASIC VERSION

<i>Fuel:</i>	Petroleum
<i>Engine power:</i>	5,5 Hp
<i>Engine start:</i>	manual or electric
<i>Weight:</i>	92 kg
<i>Weight with trolley:</i>	108 kg